

Keep for seasonal
reference

Inside this issue:

Commissioner's Corner	2
Car Care Clinic for Seniors	2
Lakeshore Recycling Clean-Up Day	2
No Parking One Inch Snowfall	3
Sustainable Options	3
Christmas Tree Collection	3
Mailbox Damage	4
Numbers To Note	4



TUESDAY
NOVEMBER 5TH

Photos show July 2024
Storm Damage
Maintenance



Lisle Township Road District



LEAF PICK-UP BEGINS OCT. 21st

The Lisle Township Road District will pick up your raked leaves beginning Monday, Oct. 21st through Thanksgiving week, weather permitting.

Remember these dates:

Mon. 10/21—First pick-up starts

Mon. 11/25—Last pick-up starts

The township leaf program is designed to assist homeowners clean up their lawns, but may not accommodate every type of tree. If you must get rid of leaves before or after those dates, please make other arrangements. Leaves may be used as mulch in your garden or landscaped areas, or put into bags as yard waste for your waste hauler.

The fields where we deposit leaves closes about Dec. 1. Our last pick-up must end before that date.

The leaf program will stop pre-maturely if we have an early snowfall or icy streets before Thanksgiving. These same trucks must be converted to plow and spread salt. You will then be responsible to clear away the leaves that are left.

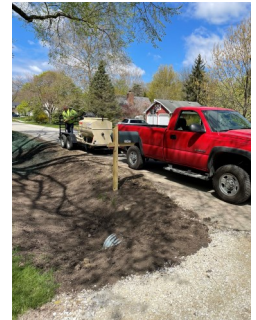
Only leaves should be in the leaf piles. Do not leave objects such as logs or rocks as it will jam our leaf loader and cause an interruption while repairs are made.

We welcome calls to our office with questions about the program, but we cannot tell you when we will be on your

street. Leaf pick-up may take from 2 to 7 days, which makes it impossible for us to predict specific pick-up dates or times or locations in advance. We can tell you when our leaf machine was last on your street.

Please read and keep the following guidelines.

Note, it is dangerous to rake your leaves into the street—keep them on the parkway, behind the curb or shoulder.

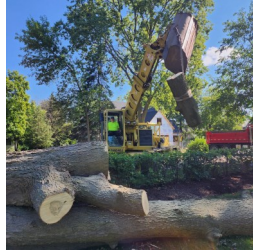


GUIDELINES FOR LEAF PICK-UP

- Rake leaves onto the parkway between the sidewalk and the curb, or between the ditch line and the edge of the road.
- Keep the streets free and clear of the leaves.
- Do not park your car in front of the leaf piles
- Don't allow leaves to clog ditches or storm drains.
- Don't put leaves in bags for us.
- **MONDAY, OCT. 21st** is the FIRST day for pick up.
- **MONDAY, NOV. 25th** before 6:30am is the LAST TIME to put leaves in the parkway.

COMMISSIONER'S CORNER - From Ed Young

Once again, the seasons change too quickly. Shortly we will begin the process of picking up leaves and preparing the equipment for winter. Our usual summer projects, resurfacing roads, replacing curbs and culverts went without incident and completed within budget.



We have been evaluating our fueling options as our existing fuel tanks are past their useful life. It is one last major project that we hope to complete this year. After detailed analysis, we will downsize the fuel storage and place the tanks above ground. The estimated cost of the replacement tanks is below what we had budgeted in prior years and the reduction will be reflected in next year's tax levy.

As I have commented on before, the operations of the Township are not up to the standards set by prior administrations. There are many special meetings, other townships are getting more grant funding, the accounting firm is having difficulty transferring historical data into their general ledger software and the

outside auditors are incorporating a prior period adjustment to get the opening balances for the audit of Fiscal Year 2023 financial statements. I encourage all residents to pay close attention to the operations of Lisle Township.

Traffic in our neighborhoods is an ongoing problem. Excessive number of vehicles, speeding and ignoring traffic control signage are issues in many of our neighborhoods. The Road District has limited tools to deal with these problems. Law enforcement is better equipped and has the authority to address these issues. I suggest that you contact the Sheriff each time you have a concern.

We are fortunate to have a stable dedicated Road District staff. Through their efforts property taxes for the Road District have been reduced and the cost to maintain a mile of road is one of the lowest in DuPage County. I thank them for their efforts.

If you have any concerns or suggestions, feel free to contact us. We enjoy talking with our constituents. In closing, I want to remind everybody if you ever see any unsafe road conditions, please contact the Sheriff immediately. The Sheriff will then contact us.



LISLE TOWNSHIP NEWS



Car Care Clinic For Seniors

Saturday, Oct. 12th, 2024 from 8:00am to Noon

Seniors may bring their cars in for a vehicle inspection. The event is hosted by Naperville/Lisle Triad at our campus garage 4719 Indiana Ave., Lisle.

Lakeshore Recycling Clean-Up Day

ANNUAL CLEAN-UP DAY— SATURDAY, OCT. 19, 2024: All residents who participate in the curbside collection programs can dispose of an unlimited amount of refuse and household debris by placing it curbside for pick up.

To participate, residents with LRS service must affix five (5) Lisle Township purple service stickers to materials set out for disposal. All items must be placed at the curb by 6:00 a.m. to ensure collection as crews will be unable to return to an area once they've passed through. Questions contact LRS Customer Service: service@lrsrecycles.com or 844-633-3577.

Clean Up Day Guidelines:

- Clean up day includes standard household refuse/garbage only.
- Materials requiring special handling and equipment are not included.
- All items must be placed to the curb by 6 a.m., Saturday morning, to ensure collection.
- Resident owned, 33-35 gallon or approved garbage containers are considered one (1) item.
- Mattress and box springs must be fully sealed in plastic. Disposal bags are available at various moving, storage and hardware stores, but any type of plastic wrapping is acceptable.
- All bags of refuse must be tied and secured. Loose bags with holes will not be accepted.
- Bags and personal containers must not exceed 35 gallons and weigh less than 50 pounds.





Don't Get a Ticket! No Parking Rules in Effect When Snow is ONE INCH!



NO PARKING restrictions during snowfalls are:

ONE INCH!

Vehicles are to be removed from township streets after one inch (1") of snowfall. Any vehicle parked on Road District streets after one (1") inch of snowfall is subject to being ticketed. The ordinance also mandates that the parking ban stays in effect for 24 hours after the snowfall so the streets can be cleared.

When the snowfall is heavier, our plows will clear center lanes first for vehicle traffic. After all center lanes are opened and cleared they plow the parking lanes. The heavier

the snowfall the longer it takes to plow.

PLEASE DO NOT PARK ON THE STREET UNTIL ALL SNOW IS REMOVED.

Any vehicle violating the ordinance may be ticketed and fined, or even towed. *Please notify visitors and all members of your household about the **ONE INCH (1") snowfall parking ban.***

The township road crew is always on call in the winter season. In some situations our red trucks may pre-wet the roads with a brine solution to keep the surface safer when snow first starts to fall. We spread salt when ice or

snow accumulates and affects traffic.

We plow arterial and secondary streets first. Cul-de-sacs and dead ends are done last. This system keeps open the roads that serve the greatest number of people.

For the safety of our crew and equipment, do not leave objects such as rocks, fences, hedges or timbers on the parkway. Homeowners may be liable for damages or injuries those objects may cause. Use a reflector on a 1/2 inch thick alu-

minum stake if you wish to mark your property edge.

Our snowplows have large blades that can push a great amount of snow toward the curb or shoulder. Most mailboxes, properly installed, can withstand heavy slush. **The township is not responsible** for damage done to mailboxes knocked over by heavy snow or slush.



SUSTAINABLE OPTIONS



Is your neighbor causing flooding on your property? If you believe someone in your area has affected drainage through construction, development or sump pump runoff, please contact :

DuPage County Building Department at 630-407-6700.

Christmas Tree Collection ...

Lakeshore Recycling Systems will pick up Christmas trees during the first three full weeks in January at no charge. Trees longer than 7' must be cut in half. Trees must be completely free of all decorations and may not be in plastic bags.



Lisle Township Road District

4719 Indiana Ave. Lisle IL 60532
Phone: 630-964-0057
Fax: 630-964-7244
E-mail: highway@lisletownship.com
www.lisletownshiproaddistrict.com
Office Hours: Monday to Friday 7:00am—3:00pm

Ed Young

Highway Commissioner



As it is **never** intentional, a heavy, wet snowfall can cause a snowplow to bury your mailbox post deep in snow. As the snow melts, moisture can seep into the wooden post, encouraging it to rot and decay. It is important to maintain your mailbox post. Keep in mind, brick mailbox enclosures are not allowed as they can damage our equipment.

Should our plow damage your mailbox, we will replace it and/or the post **provided the post is NOT rotten or decayed**. Call our office as soon as you are aware of the damage. Our crew will provide a replacement and return when weather allows to bury the post if required.

Numbers to Note

ComEd (electric company)	800-334-7661
Downers Grove Sanitary District	630-969-0664
DuPage County	
Storm Water Division	630-407-6700
Building Division	630-407-6700
Zoning Division	630-407-6700
Public Works	630-407-6800
Div. of Transportation	630-407-6900
Animal Control	630-407-2800
Health Department	630-682-7400
Sheriff (non emergency)	630-407-2400
Illinois American Water	800-422-2782
JULIE	811
www.illinois1call.com	
CALL BEFORE YOU DIG!!	
Lakeshore Recycling Systems	844-633-3577
Lisle Township	
Assessor	630-968-1183
General Assistance	630-968-2087
Road District	630-964-0057
Supervisor	630-968-2087
Youth and Family Services	630-968-1880
Nicor (gas company)	888-642-6748

www.comed.com
www.dgsd.org
www.dupagecounty.gov



www.lrsrecycles.com
www.lisletownship.com

www.lisletownshiproaddistrict.com
(also tall grass/weed control)

nicorgas.com